

PathWave Calibration Advisor

Optimize Setup for your Needs

PATHWAVE

Keysight Instrument Calibration Management

Test instrument calibration is vital to maintain optimal performance and ensure measurements meet specification just as they did when the instrument was first received. Keysight's PathWave Calibration Advisor (PCA), a built-in software application for Keysight's Windows-based instruments keeps track, and reminds you, of instrument calibration intervals.

This configuration guide helps you locate and start using PCA today.

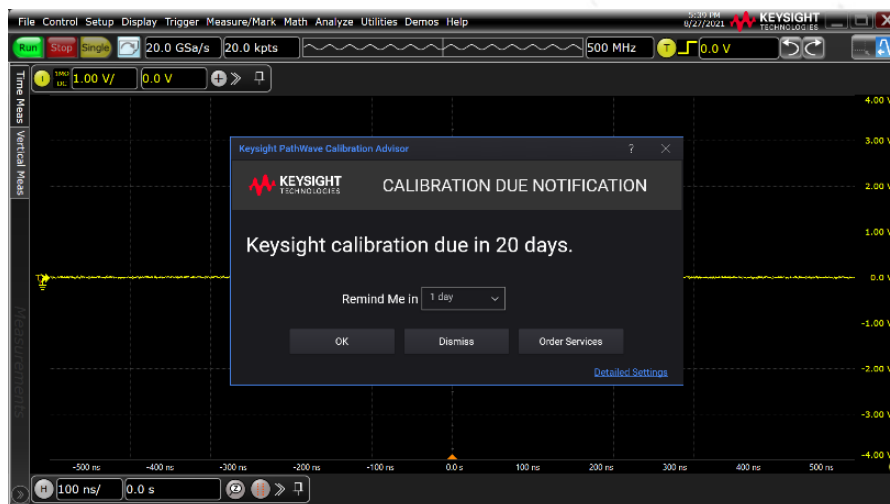


Table of Contents

Keysight Instrument Calibration Management	1
Configuring PCA for Calibration Intervals	3
Configure PCA from your instrument's front panel	3
Calibration	3
Unique QR Instrument and Calibration Codes.....	4
Built-in PathWave Calibration Advisor Help.....	4
Easy navigation to PCA on your instrument	5
Configure PCA using SCPI commands	6
PCA Enabled Oscilloscope Model Numbers.....	7
Product Availability	8
Conclusion.....	8

Configuring PCA for Calibration Intervals

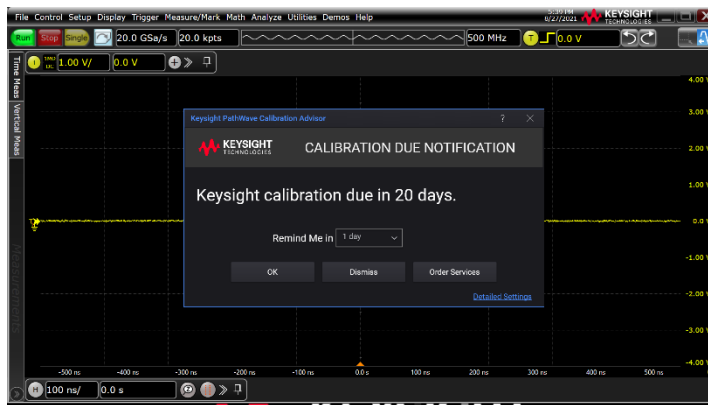
There are two methods for configuring the PCA calibration interval reminders: by using the instruments front panel, or with SCPI commands.

Configure PCA from your instrument's front panel

To launch PathWave Calibration Advisor or check your instrument's calibration status, locate and select the PathWave Calibration Advisor from your instruments front panel menu. The table below provides information for locating the PCA application on your instrument.

Calibration

PCA helps you maintain your instrument's optimal performance by enabling you to set and manage the periodic calibration settings like calibration interval. You can configure PCA to remind you when a calibration is due with a front-panel pop-up notification.



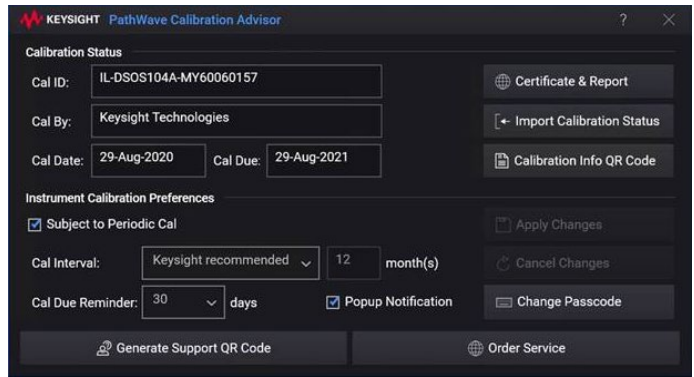
Configure PCA to:

- Receive calibration reminders
- View calibration status
- Set and manage calibration intervals
- View calibration documents and test reports
- Order Keysight-authorized services
- Refer to built-in online help
- View digital calibration label
- Obtain QR-coded configuration information

Access your instrument's latest calibration status and information by viewing the electronic calibration label that includes the last calibration date, next calibration due date, and calibration interval. The calibration label eliminates the need to hunt for your instrument's physical calibration sticker.



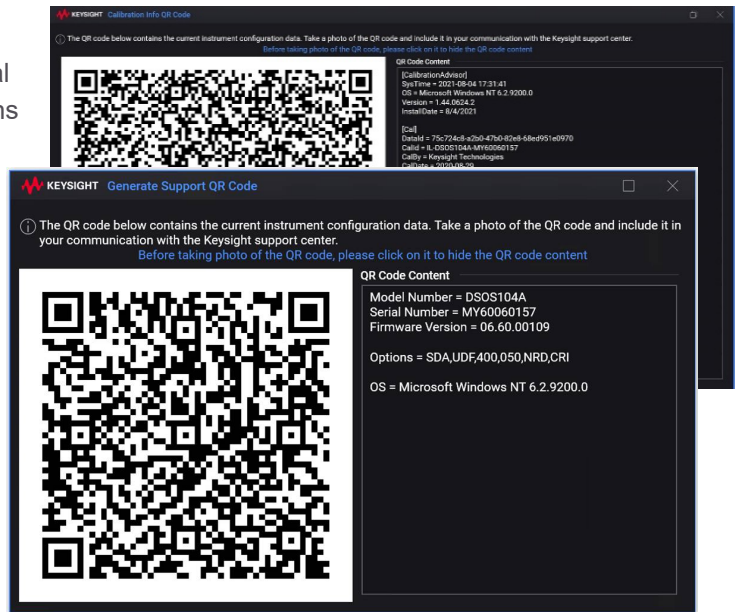
Import your instrument's calibration status document from the main PCA screen. Or, use PCA to access calibration certificates and test reports with a link to the online Keysight Support Portal (support.keysight.com).



Unique QR Instrument and Calibration Codes

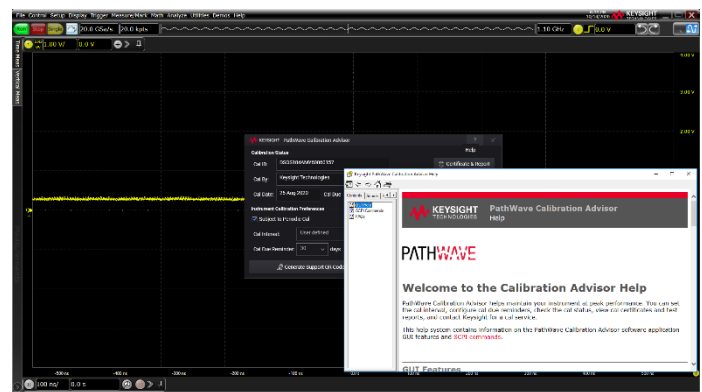
PCA stores your instrument model number, serial number, configuration including selectable options and more which makes it easy for PCA to also generate an all-in-one Support QR code that includes the details you need for easy identification, tracking, and a fast pass for service requests.

Additionally, PCA provides a calibration QR code with your instruments unique identification and detailed calibration history.



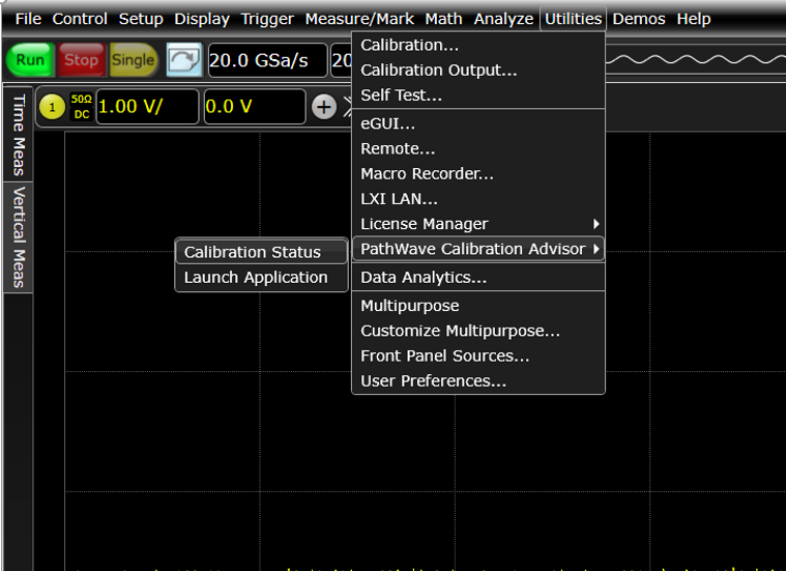
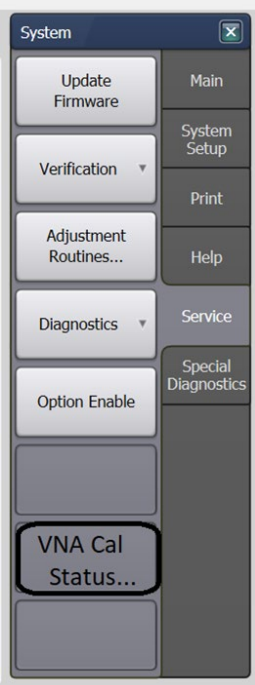
Built-in PathWave Calibration Advisor Help

The built-in help answers your questions on PCA features, how to access information and manage setting.



Easy navigation to PCA on your instrument

The following table describes and demonstrates the PCA location on your instrument.

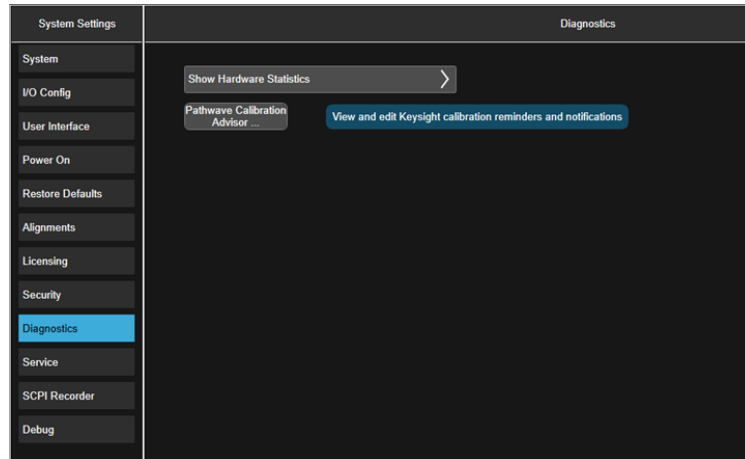
Instruments	Navigation to PCA																											
<p>Infiniium Real-Time Oscilloscopes S/V/Z Series EXR/MXR/UXR Series 9000 Series 90000 A/L/Q.X Series</p> <p>See the list of PCA enabled oscilloscope model numbers for more details.</p>																												
<table border="0"> <thead> <tr> <th><u>PNA</u></th> <th><u>PNA-L</u></th> <th><u>PNA-X</u></th> </tr> </thead> <tbody> <tr> <td>N5221B</td> <td>N5230B</td> <td>N5241B</td> </tr> <tr> <td>N5222B</td> <td>N5231B</td> <td>N5242B</td> </tr> <tr> <td>N5224B</td> <td>N5232B</td> <td>N5244B</td> </tr> <tr> <td>N5264B</td> <td>N5234B</td> <td></td> </tr> <tr> <td>N5247B</td> <td>N5235B</td> <td></td> </tr> <tr> <td>N5245B</td> <td>N5239B</td> <td></td> </tr> <tr> <td>N5225B</td> <td></td> <td></td> </tr> <tr> <td>N5227B</td> <td></td> <td></td> </tr> </tbody> </table>	<u>PNA</u>	<u>PNA-L</u>	<u>PNA-X</u>	N5221B	N5230B	N5241B	N5222B	N5231B	N5242B	N5224B	N5232B	N5244B	N5264B	N5234B		N5247B	N5235B		N5245B	N5239B		N5225B			N5227B			
<u>PNA</u>	<u>PNA-L</u>	<u>PNA-X</u>																										
N5221B	N5230B	N5241B																										
N5222B	N5231B	N5242B																										
N5224B	N5232B	N5244B																										
N5264B	N5234B																											
N5247B	N5235B																											
N5245B	N5239B																											
N5225B																												
N5227B																												

Signal Analyzers X-Series

N9000A/B, N9010A/B, N9020A/B
N9021B, N9030A/B, N9038A/B
N9040/41/42B, N9048B
SPN9003A, SPN9026A

Noise Figure Analyzers

N8973/74/75/76B



Configure PCA using SCPI commands

Standard Commands for Programmable Instruments (SCPI) commands can be used to access and control PCA as an alternative to controlling from the instrument's front panel. The PCA's SCPI commands are most convenient when controlling the instrument remotely. The following SCPI commands enable you to programmatically interact with PCA to set calibration intervals, notifications, or to change your passcode.

SYSTEM: SERVICE:MANAGEMENT:CALIBRATION:

INFORMATION

INTERVAL:

DEFAULT

VALUE

TYPE

NOTIFICATION:

ENABLE

PASSCODE:

CHANGE

(VALUE)

PERIODIC:

ENABLE

REMINDER

PCA Enabled Oscilloscope Model Numbers

Infiniium Real-Time Oscilloscope Series	Model numbers
S	DSOS054A, MSOS054A, DSOS104A, MSOS104A, DSOS204A, MSOS204A, DSOS254A, MSOS254A, DSOS404A, MSOS404A, DSOS604A, MSOS604A, DSOS804A, MSOS804A
V	DSAV084A, DSOV084A, MSOV084A, DSAV134A, DSOV134A, MSOV134A, DSAV164A, DSOV164A, MSOV164A, DSAV204A, DSOV204A, MSOV204A, DSAV254A, DSOV254A, MSOV254A, DSAV334A, DSOV334A, MSOV334A
Z	DSAZ204A, DSOZ204A, DSAZ254A, DSOZ254A, DSAZ334A, DSOZ334A, DSAZ504A, DSOZ504A, DSAZ592A, DSOZ592A, DSAZ594A, DSOZ594A, DSAZ632A, DSOZ632A, DSAZ634A, DSOZ634A
EXR	EXR104A, EXR254A, EXR108A, EXR258A, EXR054A, EXR204A, EXR058A, EXR208A
MXR	MXR054A, MXR058A, MXR104A, MXR108A, MXR204A, MXR208A, MXR254A, MXR258A, MXR404A, MXR408A, MXR604A, MXR608A
UXR	UXR0051AP, UXR0134A, UXR0164A, UXR0204A, UXR0252AP, UXR0254A, UXR0254AP, UXR0334A, UXR0402A, UXR0402AP, UXR0404A, UXR0404AP, UXR0502A, UXR0504A, UXR0592AP, UXR0594A, UXR0594AP, UXR0702AP, UXR0704AP, UXR0804A, UXR1004A, UXR1104A
9xxx	DSO9024H, DSO9054H, DSO9064A, MSO9064A, DSO9104A, DSO9104AN, DSO9104H, MSO9104A, DSO9204H, DSO9254A, MSO9254A, DSO9404A, MSO9404A
9xxxx	DSA90254A, DSO90254A, DSA90404A, DSO90404A, DSA90604A, DSO90604A, DSA90804A, DSO90804A, DSA91204A, DSO91204A, DSA91304A, DSO91304A
93xxxL	DSA93004L, DSO93004L
X9xxxxQ	DSAX92004Q, DSOX92004Q, DSAX92504Q, DSOX92504Q, DSAX93304Q, DSOX93304Q, DSAX95004Q, DSOX95004Q, DSAX96204Q, DSOX96204Q
X9xxxxxA	DSAX91304A, DSOX91304A, MSOX91304A, DSAX91604A, DSOX91604A, MSOX91604A, DSAX92004A, DSOX92004A, MSOX92004A, DSAX92504A, DSOX92504A, MSOX92504A, DSAX92804A, DSOX92804A, MSOX92804A, DSAX93204A, DSOX93204A, MSOX93204A

Product Availability

The PathWave Calibration Advisor will be updated as more products are PCA enabled.

Conclusion

Start using PCA today to ensure current calibration with easy configurable reminders.

For questions on PathWave Calibration Advisor, you can contact **Keysight's Technical support** team and click on "Visit Keysight Product Support".

Learn more at: www.keysight.com

For more information on Keysight Technologies' products, applications or services, please contact your local Keysight office. The complete list is available at: www.keysight.com/find/contactus

